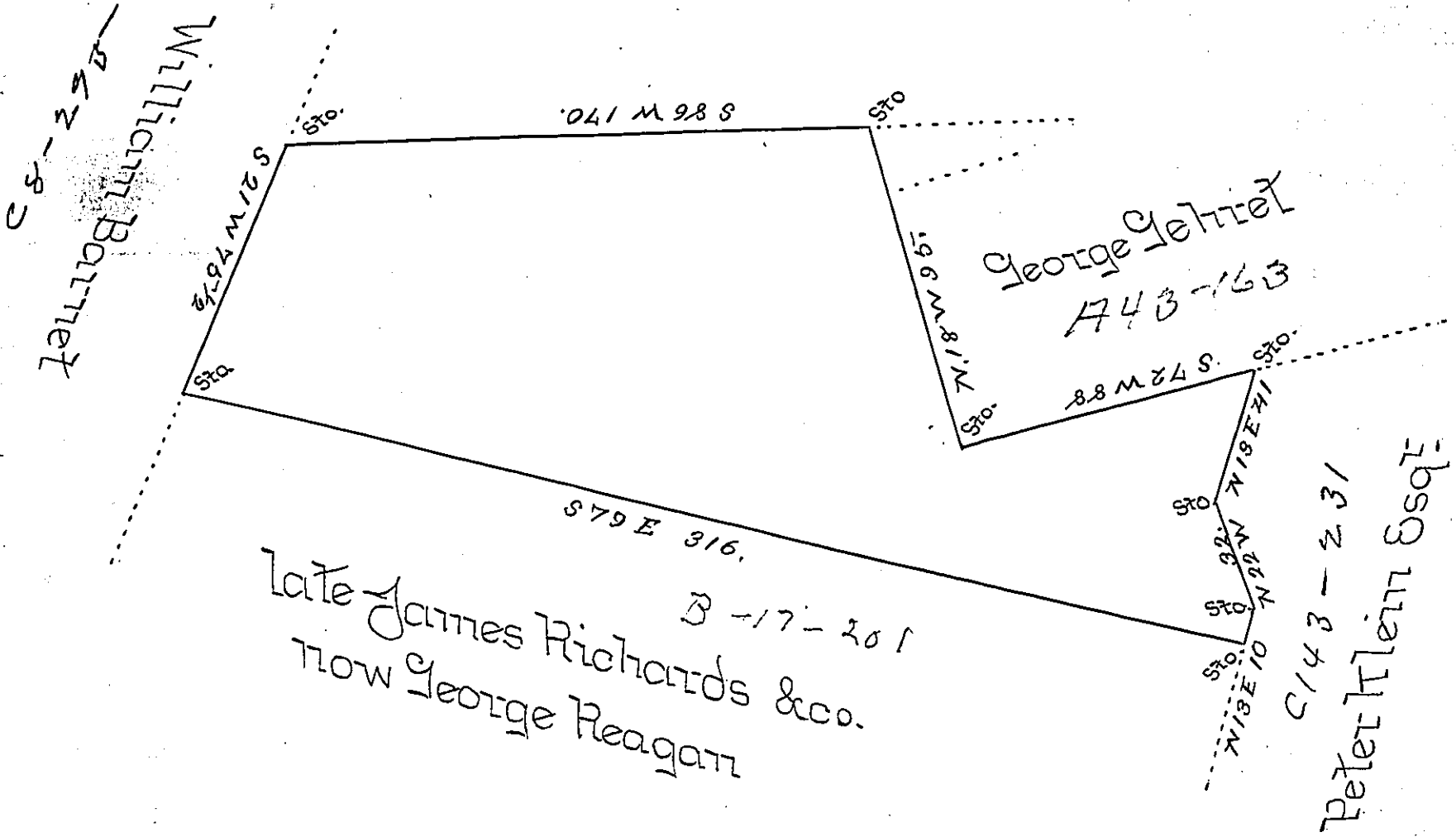


Blue Mountain



Draught of a Tract of Wood Land, situate in Albany Township Berks County, surveyed in Pursuance of a Warrant dated the Ninth day of December A.D. 1822 granted to George Reagan, containing one hundred and forty four Acres and Seventy three perches and Allowance of six per Cent. Surveyed May 6th 1850 Saml Hoffman U.S.

To John Laporte Esq }
 Surveyor General }
 Pa }

IN TESTIMONY that the above is a copy of the original remaining on file in the Department of Internal Affairs of Pennsylvania, made conformably to an Act of Assembly approved the 16th day of February, 1833, I have hereunto set my Hand and caused the Seal of said Department to be affixed at Harrisburg, this sixth day of September 1898.

James W. Latta
 Secretary of Internal Affairs.